



Smart Phone link  
to [www.acicomms.com](http://www.acicomms.com)

# DSIM<sup>®</sup> Series

## Digital Station Intelligence Manager

*The New Age of Adaptability  
For Automatic Gain Controllers*



**DSIM<sup>®</sup>-MV**  
Phillips<sup>®</sup>/C-COR<sup>®</sup>



**DSIM<sup>®</sup>-SA<sup>®</sup>**  
Cisco<sup>®</sup>/  
Scientific Atlanta<sup>®</sup>



- Available across multiple platforms
- 30 days of on-board data
- Remote access options available
- Key coded analog or QAM pilot selection over the full spectrum
- Simple setup
- Cost effective

**ACI Communications, Inc.**  
[www.acicomms.com](http://www.acicomms.com)  
1-800-336-3526

# DSMC Software INSTALLATION GUIDE

## Table of Contents

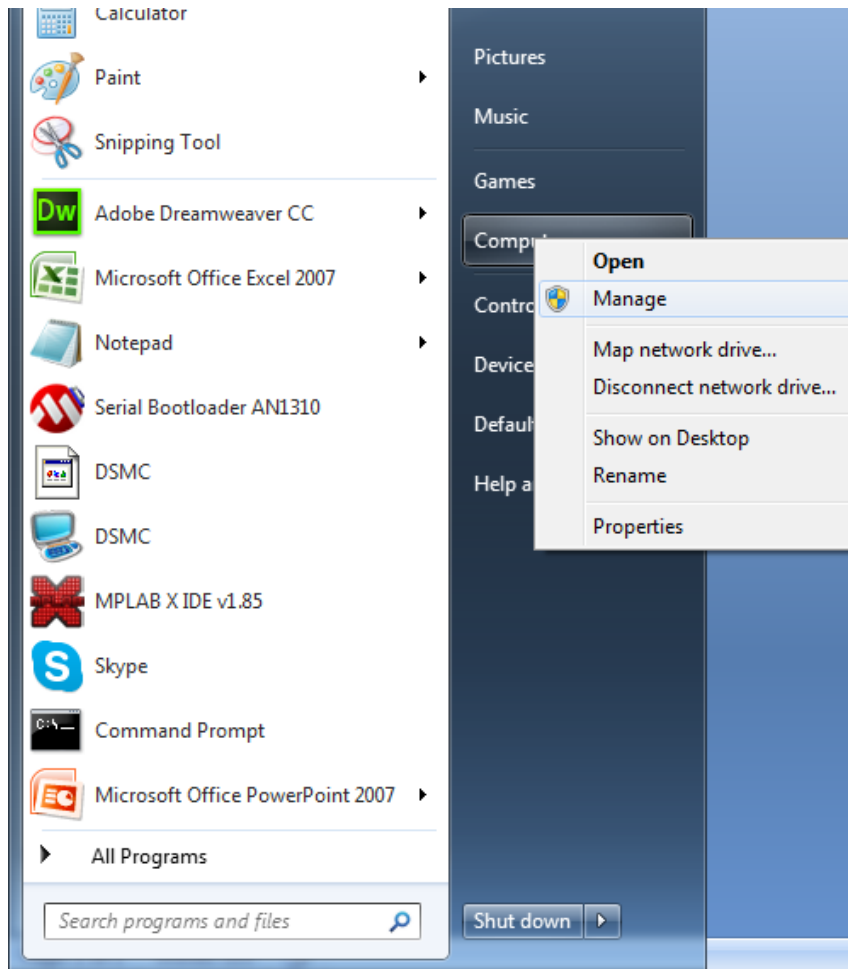
1. INTRODUCTION: .....	3
2. INSTALLATION: .....	3
1. OPEN SOFTWARE EXACUTABLE FILE AND INSTALL THE DSMC PROGRAM.....	3
2. SET UP COM PORT .....	3
3. LOCATION AND LOG TIME .....	6
4. RECORD DATA LOGS .....	7
5. THE DATA LOG AND THE EVENT LOG WILL BE SAVE IN A CSV FORMAT .....	7

## 1. Introduction:

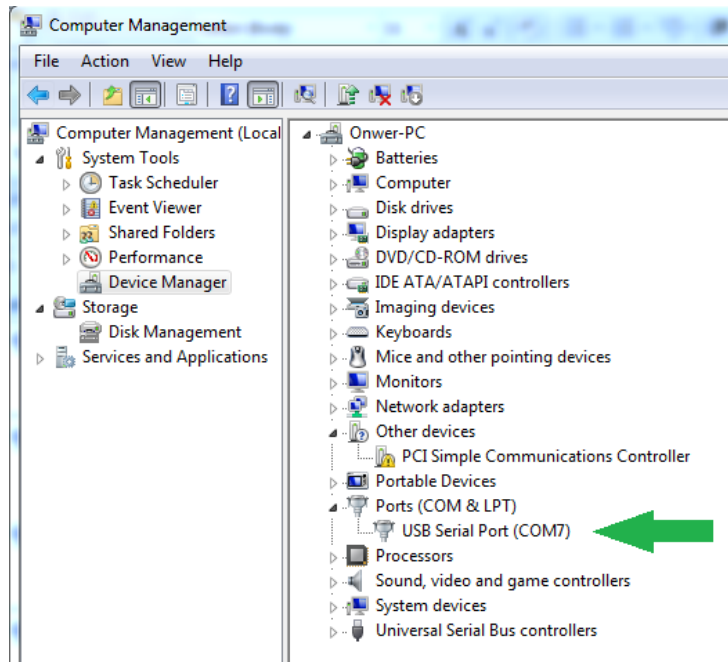
The DSMC software program allows the use of a laptop computer to access the extended DSIM setup parameters and analysis of real time or the stored data in the DSIM AGC modules. This guide provides the instructions on how to install and use the software.

## 2. Installation:

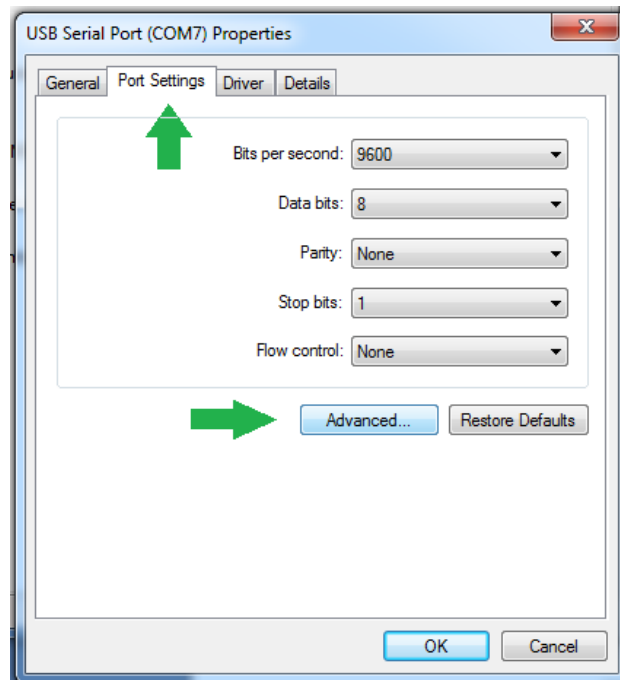
1. Open software executable file and install the DSMC program
2. Set up COM port
  - b. Connect COM cable from the PC to the DSIM.
  - c. On Windows Bar, right click on **Computer** or **My Computer** and select **Manage**.



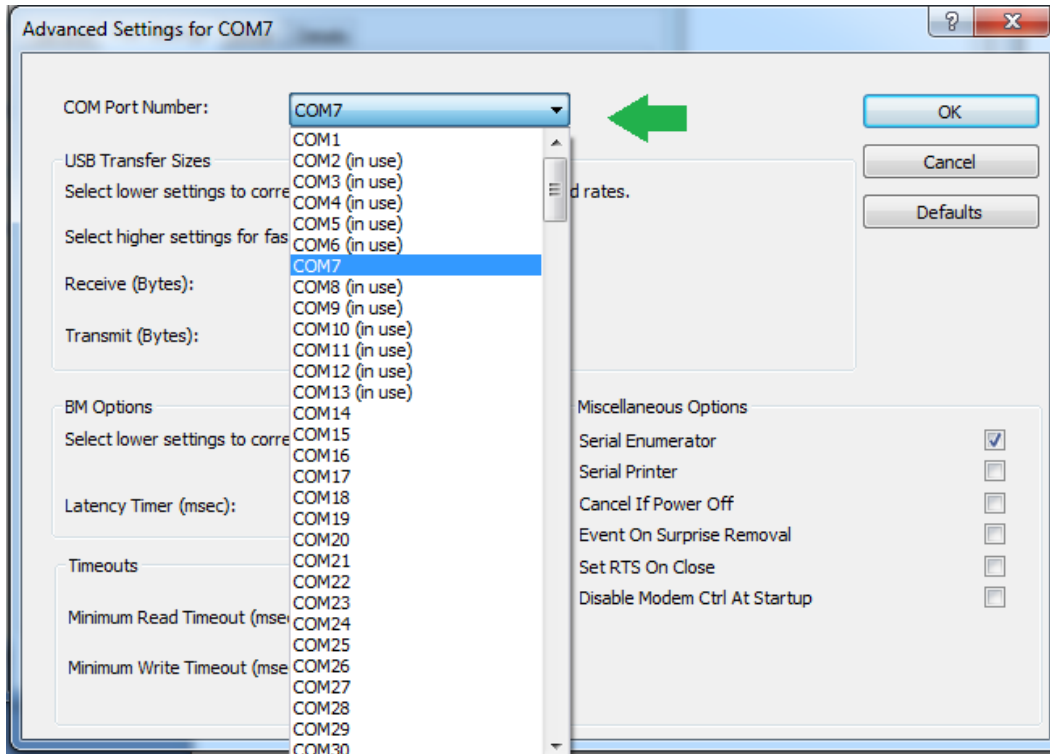
d. In **System Tools** select **Device Manager**.



- e. Expand **Ports (COM & LPT)** and look for **USB Serial Port (COM#)**.
- f. If there is more than one **USB Serial Port (COM#)**, then unplug for 5 sec. and plug-in the cable to determine which one you are using.
- g. If the port is less than 13, skip to open the DSMC program.
- h. If the port is greater than 12, right click on **USB Serial Port (COM#)** and select **Properties**.



- i. Click **Port Settings** and select **Advanced**.
- j. Select a COM port from 1 to 12.



- k. Open the DSIMC program and select the com port that you selected in the **Device Manager**.
  - i. If no data shows up, check the bottom middle of the page.
  - ii. If it says "DSIM timed out" then make sure the DSIM is powered on and the cable is connected properly.
- l. The current DSIM data will show up on the right side of the page.



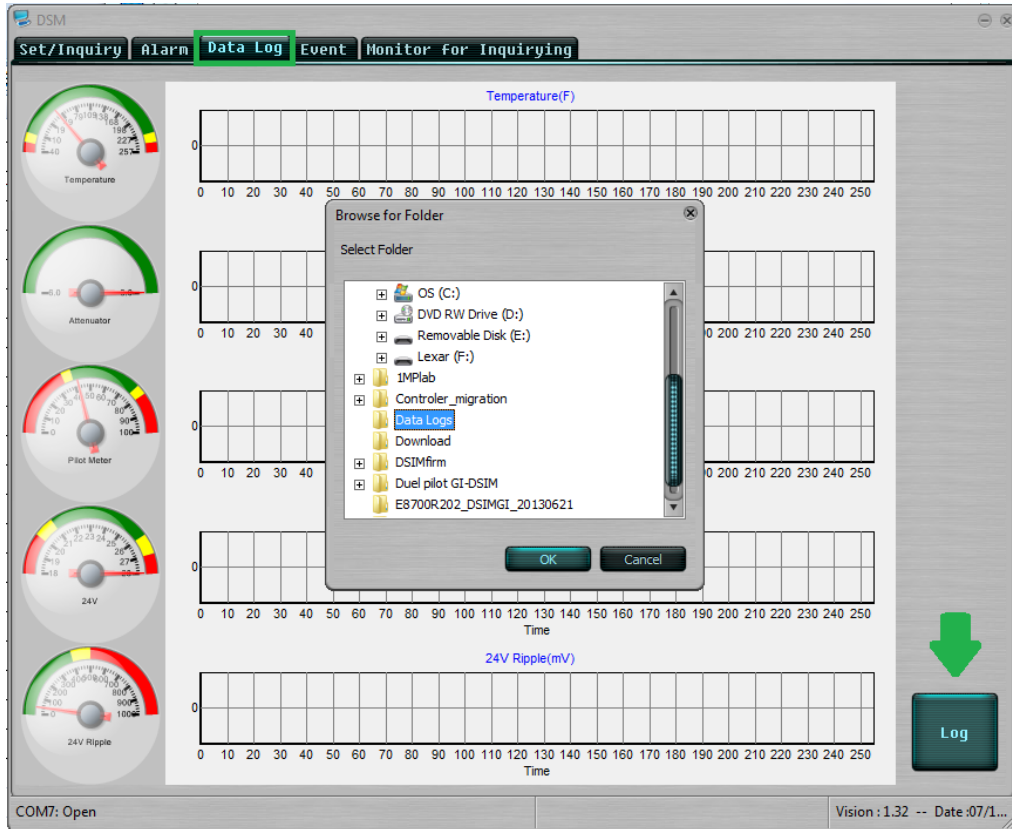
3. Location and Log time

- a. Set the **Data Log Time** to the desired interval of sample storage and then click on **Log Time**. Note: The DSIM stores up to 256 samples, after that the oldest samples are deleted one by one as space is needed, so you will always have access to the latest 256 samples recorded. Recording samples every minute will store approximately 4 hours worth of data. Recording samples every 4 hours will store approximately 40 days worth of data.
- b. In **Location**, put an address, name or number to keep the data more organized when working with several amplifiers. Then Click **Set**.



4. Record Data logs

- c. Click on the **Data Log** tab
- d. Click on the **Log** Button
- e. Find a file to save the **Log Data** and **Event Data** in.



5. The Data Log and the Event Log will be save in a CSV format

	A	B	C	D	E	F
1	Time	Temperature(F)	Attenuator(dB @ 1GHz)	Pilot (dBuV)	24V(V)	24V Ripple(mV)
2	11/30/2013 7:01	156	1897	75.4	23.9	10
3	11/30/2013 7:31	163	1866	74.5	23.9	12
4	11/30/2013 8:01	170	1894	73.8	23.9	10
5	11/30/2013 8:31	176	1867	73.9	23.9	10
6	11/30/2013 9:01	182	1890	73.9	23.9	10
7	11/30/2013 9:31	186	2015	73.8	23.9	10
8	11/30/2013 10:01	186	1942	71.9	23.9	10
9	11/30/2013 10:31	187	1961	71.9	23.9	10
10	11/30/2013 11:01	187	1948	72.9	23.9	10

ACI Communications, Inc.  
23307 66th Avenue South  
Kent, Washington 98032

Tel: (253) 854-9802  
Fax: (253) 813-1001  
Toll Free: (800) 336-3526

2014 ACI Communications, Inc.  
All rights reserved

**ACI** Communications, Inc.  
23307 - 66th Avenue South - Kent, WA - 98032  
Phone: (253) 854-9802 - Fax: (253) 813-1001 - [www.acicomms.com](http://www.acicomms.com)

